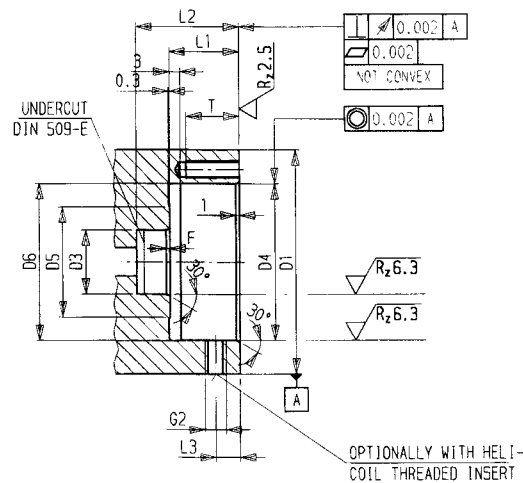
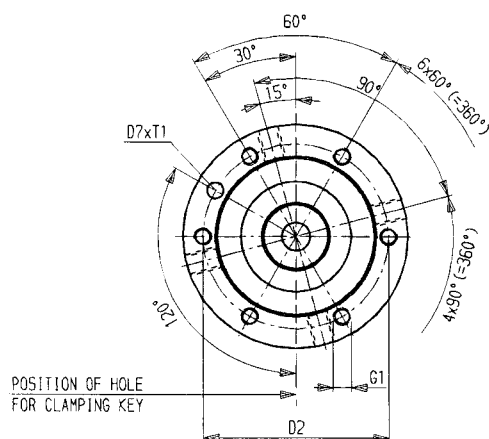


- For fitting into short spindles (DIN 69002) for holding HSK tools
- Mounting flanges for short spindles include clamping cartridge, cover ring, and holding screw
- Can be accurately adjusted to concentricity using the adjusting screw on the machine spindle

All dimensions in mm.

D-HSK	D ₁	D ₂	A	kg/lb	Order Number
32	40	45	12	0.20/0.44	355.617.032.000
40	50	55	15	0.30/0.66	355.617.040.000
50	63	70	18.5	0.60/1.32	355.617.050.000
63	80	87	24	1.20/2.65	355.617.063.000



Internal spindle contour

D _{HSK}	D ₁	D ₂ ± 0.1	D ₃ H7	D ₄ F8	D ₅	D ₆ ± 0.2	D ₇	E	L ₁ ± 0.1	L ₂ min.	L ₃	F	G ₁	G ₂	T	T ₁ ± 0.5
32	40	33	13	28	22	28.2	4.0	0.4 x 0.2	16.2	25	5.5	1.0	M3	M4	10	3
40	50	41	15	35	25	35.2	4.5	0.4 x 0.2	18.2	27	6	1.0	M4	M5	13	3.5
50	63	52	18	44	31	44.2	5.0	0.6 x 0.3	19.2	29	7	1.0	M5	M6	15	3.5
63	80	66	20	56	35	56.2	5.0	0.6 x 0.3	22.2	32.5	8	1.5	M6	M8 x 1	16	3.5