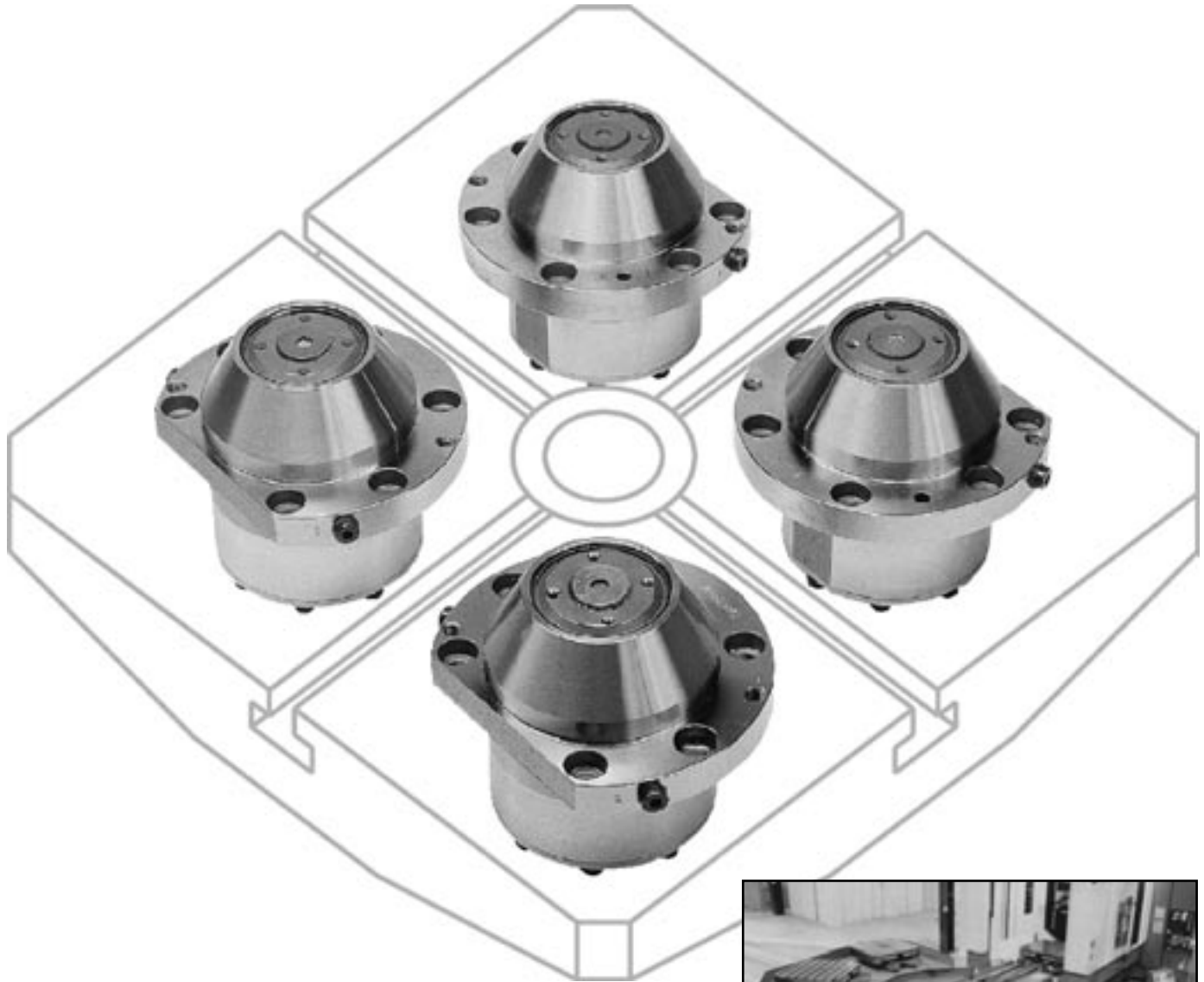


Standard clamping cylinders for pallet clamping systems

Designed for pallet clamping on machining centers



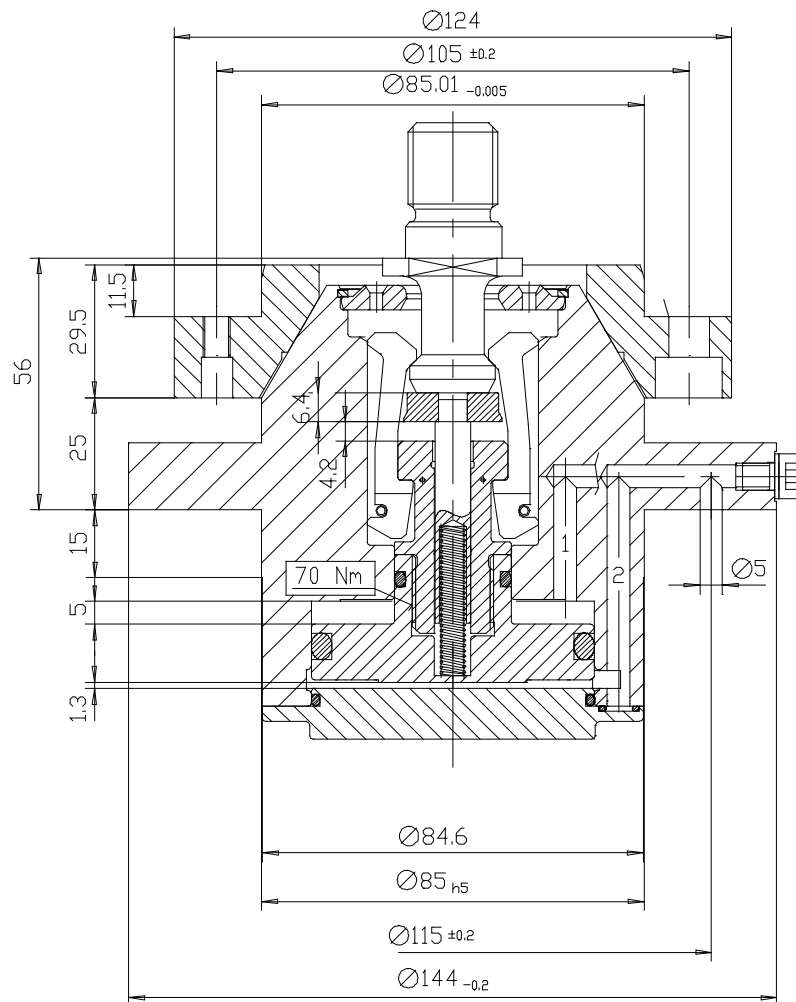
Standard clamping cylinders for pallet clamping systems

With the BERG Series 376 Pallet Clamping Cylinder, pallets are placed onto the conical clamping cylinders and securely locked into place. To avoid contamination, air is connected and the taper and gripper area cleaned during pallet lowering. When a pallet is not on the station, a spring-loaded cover prevents chips or other dirt from entering the gripper cavity.

Two or four cylinders can be used to clamp a pallet. Standard units are available from 10 to 35 kN (2,250 to 7,875 lb) per-cylinder clamping force.

Several standard sizes are available in various configurations.

Other sizes are also available — please contact us.



Note: These dimensions are for information only. Please request the latest revision and other sizes when designing.

Model	Maximum clamping pressure	Maximum clamping force per cylinder
SPH-10	80 bar / 1176 psi	10 kN (2,250 lbs)
SPH-38	80 bar / 1176 psi	20 kN (4,500 lbs)
SPH-41	100 bar / 1470 psi	35 kN (7,875 lbs)

Available accessories and options

- Retention Knobs (AZB...)
- Modifications to standard units
- Engineering services